

# YEAR-END REPORT



**CAREER  
CONNECT  
SOUTHWEST**

**2022-2023**

# 2022-2023 REPORT

## IMPACTS

The 2022-23 school year brought marked growth in partnership, funding and capacity for our Network members to move toward the goals in our Strategic Plan.

By the end of the 2023-24 school year our network will create the conditions to...

### 1. Increase postsecondary enrollment for a credential beyond High School.

**Network Highlights:** All Vancouver High Schools and Hockinson participated in Washington STEM's High School to Post Secondary project with funding and technical assistance from the Network. This project supports cycles of inquiry with students, staff and families that result in equitable access to dual credit and an increase in postsecondary enrollment. We will add up to four more schools in 2023-24 to this statewide project.

**Progress:** In partnership with Washington STEM, we have developed a Career Pathways Readiness Framework that will support schools in examining their K-12 systems to ensure their students graduate ready for their next step. In addition, we supported the passing of HB1308 (Graduation Pathways) and SB5243 (High School and Beyond Planning) and will offer technical assistance to partners to implement these critical components of postsecondary readiness next year.

### 2. Broaden participation in Career Explore, Prep and Launch to reach 8,000 students per year.

**Network Highlights:** The Network redistributed over \$110,000 to 11 partners to design and implement new Career Exploration programs. Our group of local program builders nearly tripled this year and together secured more than \$600,000 of additional funds from Career Connect WA.

**Progress:** Network programs and partners collectively reached 7,185 students last year and offered career-connected learning opportunities in all 30 school districts! 189 local companies offered their employees' time and expertise to create these experiences.





## 2022-2023 REPORT

### 3. Create rigorous opportunities for students to be mentored by professionals that help them develop STEM Literacy.

**Network Highlights:** nPower Girls took off this year, with six schools hosting their own after-school programs which connected over 200 students in 4th-6th grades with female mentors in STEM, with direct support from the Network. Additionally, our STEM Swap Family Robotics program reached more than 185 preschoolers and their adults through our partnerships with 1-2-3 Grow and Learn, Early Achievers, and Math Anywhere!

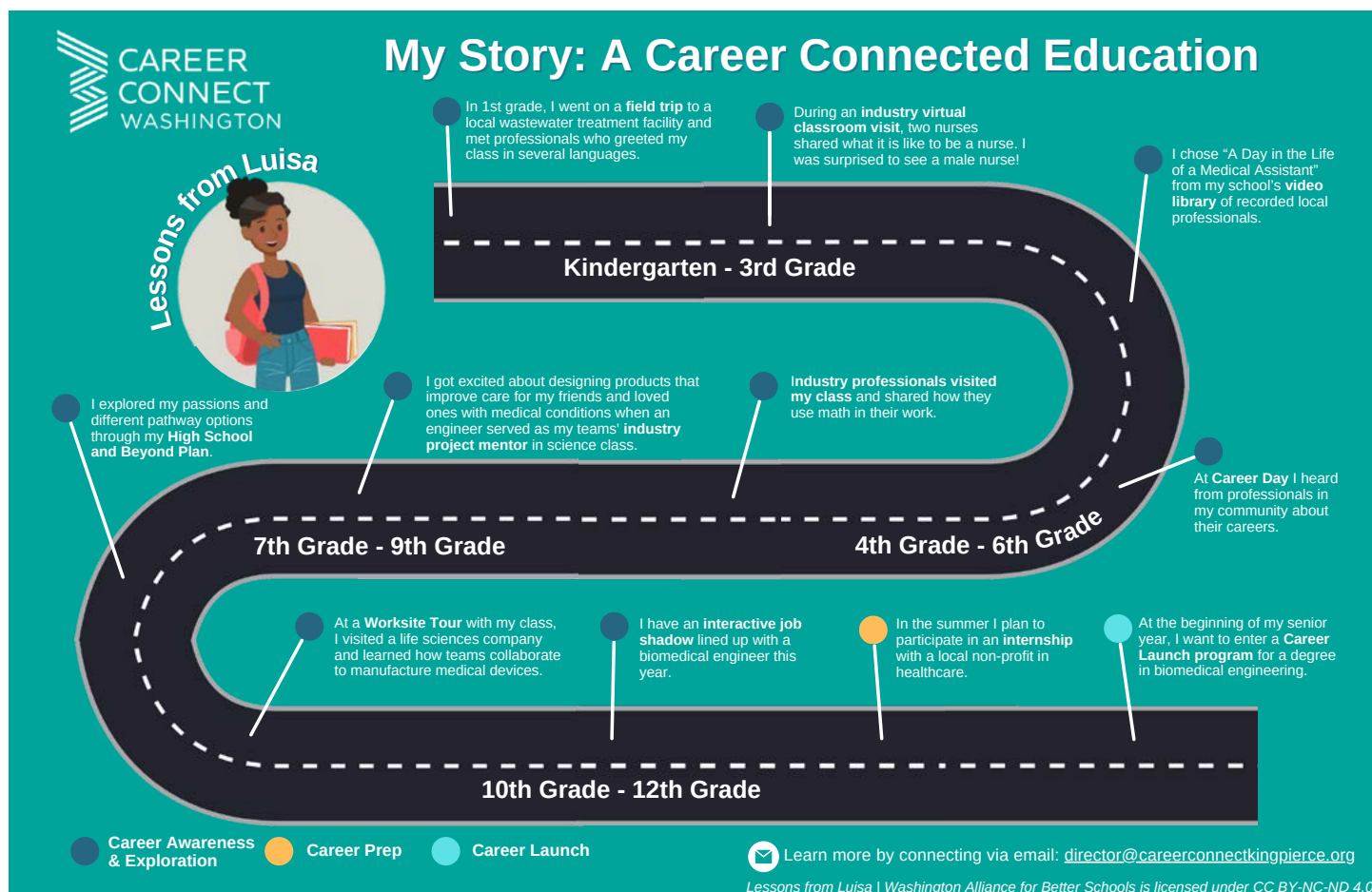
**Progress:** Rigorous engagements, which include mentoring programs like nPower Girls, flipped and traditional internships, reached 775 students. Our formal partnership with ESD112's Youth Employment Services program helped to place over 160 students with disabilities in work readiness training and paid work-based learning.



# A STUDENT'S PERSPECTIVE

## *Career Connected Learning in STEM...how does it look for students?*

Our partners at the King-Pierce Career Connected Learning Network want to introduce you to Luisa to show how Career Connected Learning, particularly in-demand and strong wage earning positions in STEM, can look for a student as they progress from kindergarten to graduation and beyond! Career exploration begins early and occurs often, across all courses and student experiences!





# PARTNERSHIP HIGHLIGHTS

**WSU Wahkiakum County Extension** received a Program Builder Grant through Career Connect WA to implement a robust series of Career Exploration programs that included career talks, site visits, and hand-on exploration in robotics, fisheries and manufacturing for 524 students in Wahkiakum and Naselle Grays River School Districts (that's nearly 70% of the total student enrollment in these two rural districts)!

**The SW WA Rural CTE Cooperative** also received a Program Builder Grant to develop four new CTE Career Prep pathways. This pilot project includes students from Trout Lake, White Salmon, Stevenson-Carson, Glenwood, Klickitat, Wishram, Lyle, Pacific Crest Innovation Academy, Hockinson, Ocean Beach and Toutle Lake School Districts, and will launch brand new courses in IT/Computer Science and Careers in Education in the fall of 2023..

# WHAT'S AHEAD

In 2023-24 we will continue to support partners in connecting students to meaningful STEM and Career Connected Learning opportunities. We are excited to launch the Career Pathways Readiness System, expand the H2P project, grow our Program Builders, and create more opportunities for students to learn *about* and *from* work, earlier and more often.





# CAREER CONNECT SOUTHWEST

A PROGRAM OF EDUCATIONAL SERVICE DISTRICT 112

## About Us

Career Connect Southwest is one of nine regional career connected learning networks under the larger Career Connect Washington (CCW) as well as a partner network of Washington STEM. CCSW is funded through Career Connect Washington, Washington STEM and the contributions of school districts, higher education partners, business and industry.



## Our Mission

Career Connect SW engages with K12, higher education, business, industry and the community to expand the skilled workforce through work-related learning opportunities that serve K12 students in every community in the ESD 112 region.

## Our Vision

Each student graduates with clear pathways from school to prosperous career opportunities that are not predictable by social, cultural, gender, racial or economic factors.

## Contact

Vickei Hrdina, *Executive Director, Career Connect SW*  
360.952.3427 • [vickei.hrdina@ESD 112.org](mailto:vickei.hrdina@ESD 112.org)  
[careerconnectsw.org](http://careerconnectsw.org)